



REP-200 EMC

Electronic Regulator for Proportional Valves at Double Solenoid

The command REP-200 and designed to drive proportional valve solenoid with a double ring that is open those valves that do not have the internal transducer positioning. The REP200 is a device microcontroller and thanks to this technology "DIGITAL" and 'can drive any type and brand of proportional valve, a voltage of between 10 and 30 Vdc and a current between 0 and 2500mA. . The adjustment of current and ramps is done by a PC with special software GAMMA 1 SUITE. The regulator and 'integrated in a box with a bar omega attack.

SUPPLY VOLTAGE.....da 8V @ 30V
 CORRENT ABSORBED.....18mA @ 12V
 RISOLUTION INPUT POTENTIOMETER.....10Bit
 OUTPUT SUPPLY VOLTAGE POTENTIOMETER..... + 5V
 MAX. OUTPUT POWER POTENTIOMETER.....1W
 BEST POTENTIOMETER VALUE.....4K7/10K
 INPUT REFERENCE.....0 – 4,5 V / 0-10V/ PWM
 ZONE OFF.....0V
 OPERATING CURRENT RANGE
 PROPORTIONAL VALVESda 0.05A @ 2,5 A
 CORRENTE REGULATION Imin., Imax.....0 – 50%
 OPERATING TIME RANGE.....0 – 20Sec
 PWM.....120Hz- 330Hz
 RESOLUTION PWM9 Bit
 TOLLERANCE+/-2%
 OPERATING TEMPERATURE RANGE.....-15°C ÷ +70°C
 CONNECTOR.....connector phenix 12 poli 3,54"
 ENVIRONMENTAL SEALING.....IP55
 FILTER EMI :.....only input and output
 OUTPUT PROTECTION OF THE SHORT-CIRCUIT
 REPORTING VALVES INTERRUPTED OR OFFLINE
 PROGRAMMING PARAMETRES Imin., Imax., Ramps,
 Input reference, Valves supply, PWM at work,
 Sensitive e regulation of the input signal , regulation central point
 OPTIONAL : Serial comunication rs232 , CanBus



REP-200-XXX



REP-200-RS232

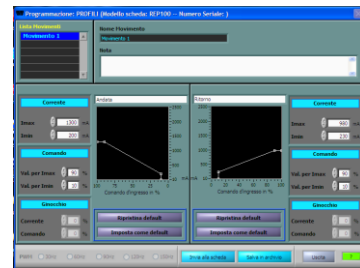


Image Program Sistem Gamma 1 SUITE

PRODUCT WITH THE EUROPEAN DIRECTIVE RHOS 2002/95/CE

Certification CE

EMC European Norms EN61000-6-2 industrial immunity

EN 61000-6-4 Issue

Note if you use cables longer than 3 meters you must enter a ferrite EMI 7427044 (74270057) on the cable of the valve.

- Codice Articolo :** F00170-0000-000 REP-200 model Standard
 F00170-0232-0RS REP-200 model with serial RS232
 F00170-0005-1DG REP-200 model with IN 0-5V e 1 IN digital
 F00170-0005-2DG REP-200 model with IN 0-5V e 2 IN digital



REP-200 EMC

Electronic Regulator for Proportional Valves at Double Solenoid

OPERATION

The regulator REP-200 and 'integrated in a box with a graft omega bar with the clamp 12 poles pull on the frontier. The system works on the principle of pulse amplitude modulated PWM said, and return DC to obtain an output current proportional solenoid on the input signal.

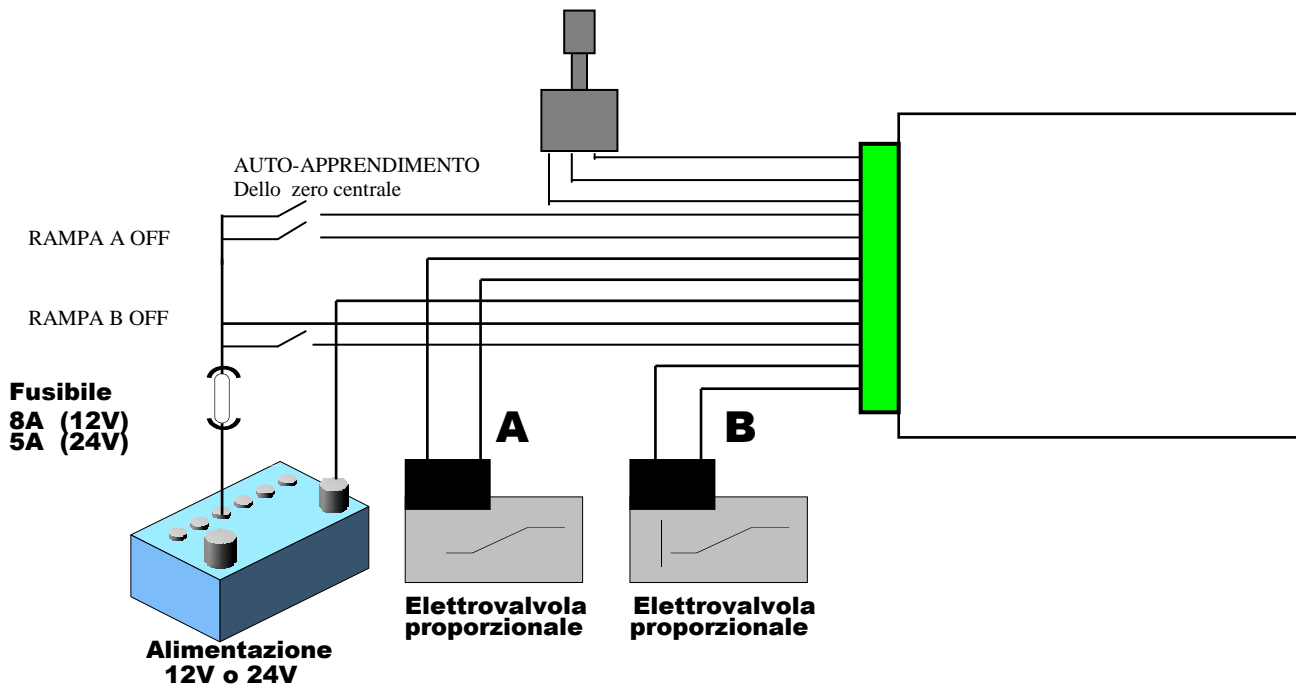
Have been provided protections against short-circuit output, current-limiting in case of over temperature protection and reverse the polarities' food.

CALIBRATION

The REP-200 can 'be adjusted at will by PC with dedicated software GAMMA 1 SUITE.

By entering into the cable connector, the system will automatically place in the mode 'programming, the displays the data in REP-200. Using keys and on June' and can scroll through the various data by changing the numeric keypad the parameters you want, then enter that confirmed, and we move on to next view, so until you see the writing PROGRAM. Can provide REP-200 al ready' pre-calibrated to customer specification

INSTALLATION F00170-0000-000 REP-200

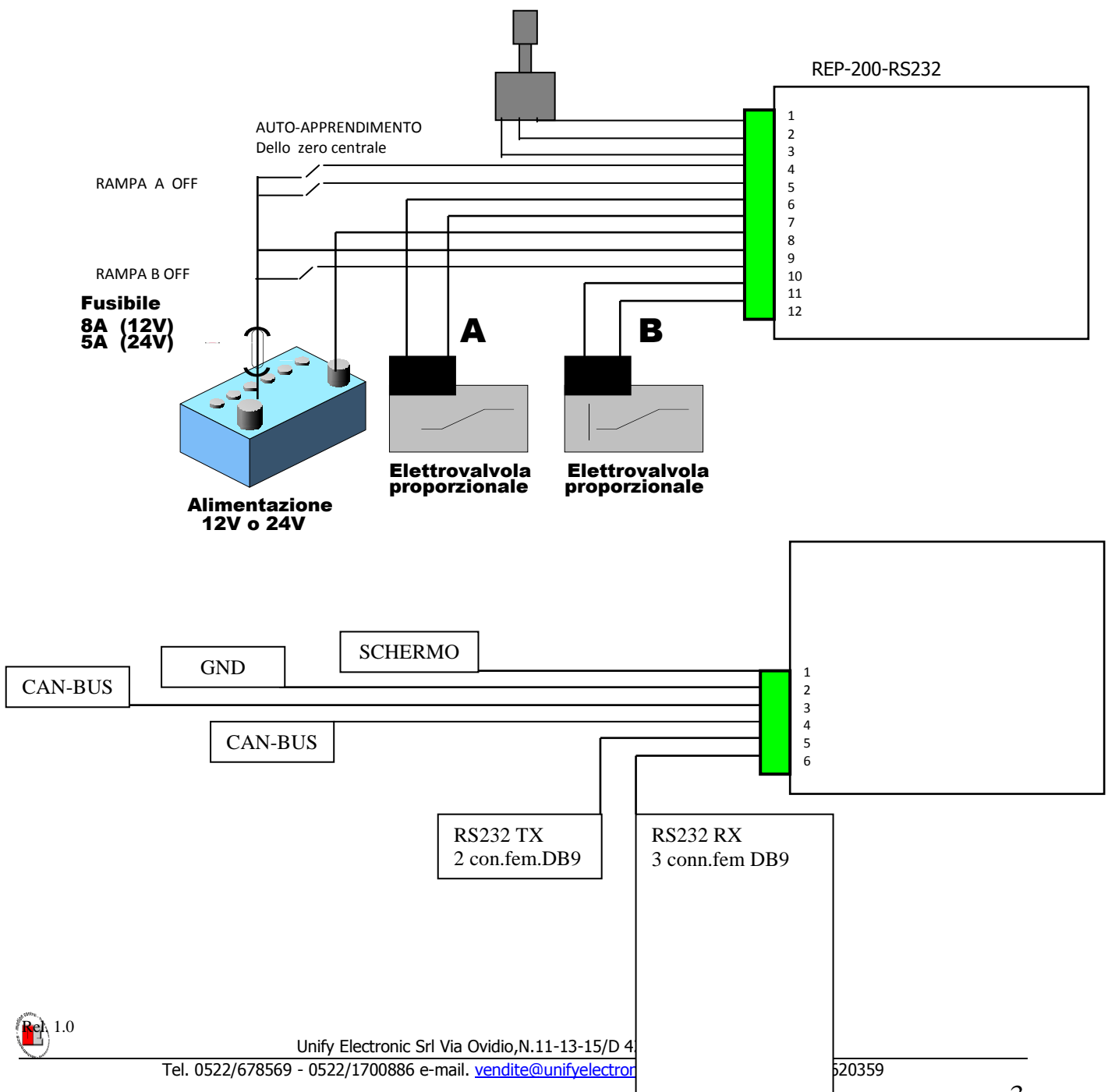




REP-200 EMC

Electronic Regulator for Proportional Valves at Double Solenoid

INSTALLATION F00170-0232-0RS REP-200 Con seriale RS232

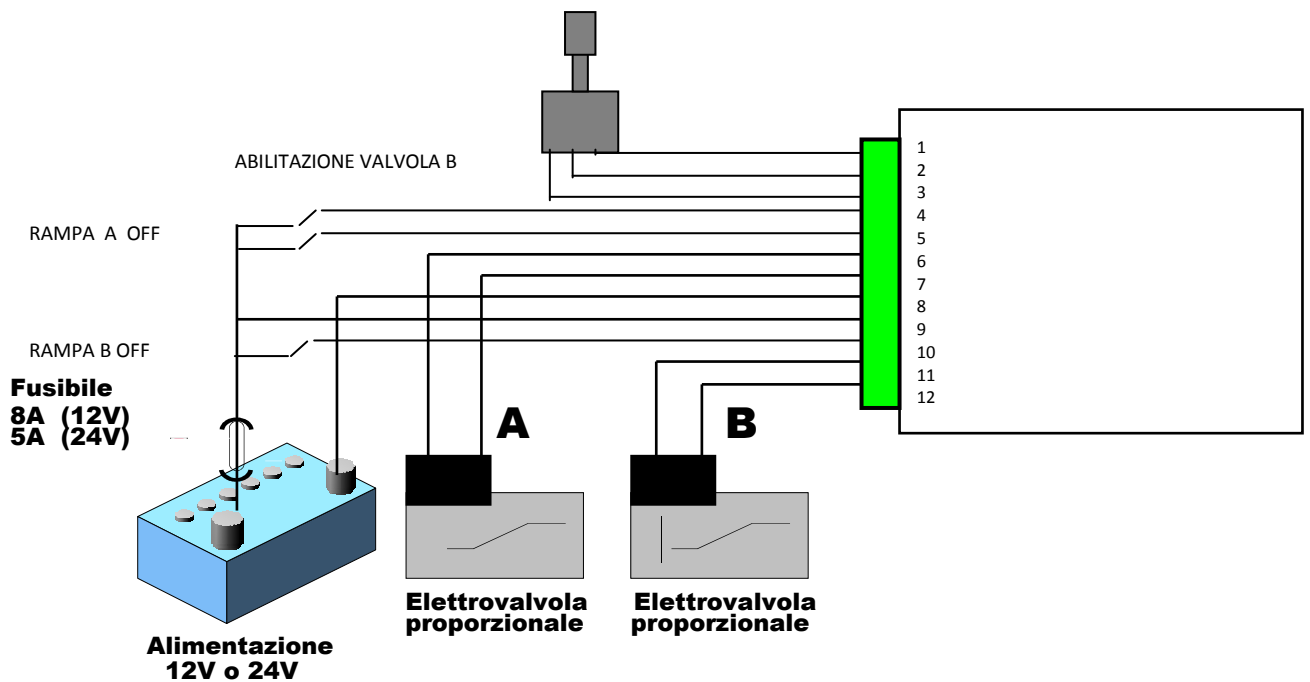




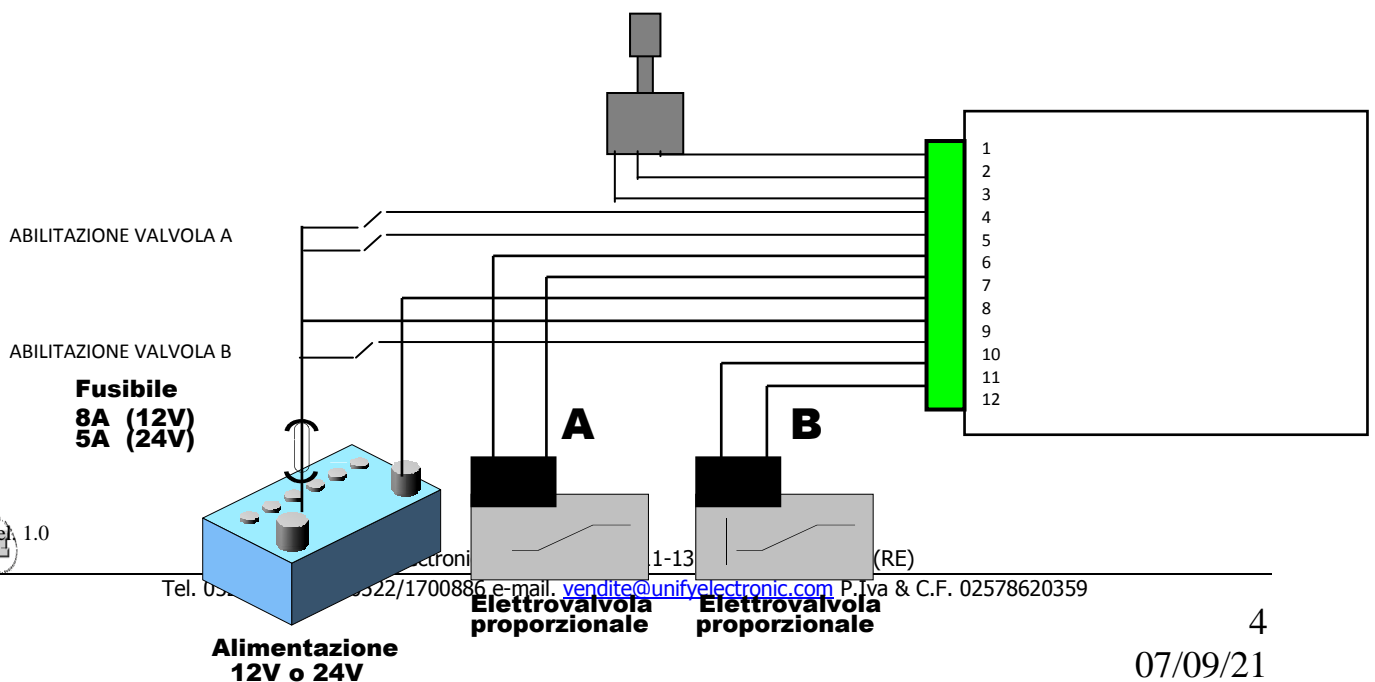
REP-200 EMC

Electronic Regulator for Proportional Valves at Double Solenoid

INSTALLATION F00170-0005-1DG REP-200



INSTALLATION F00170-0005-2DG REP-200

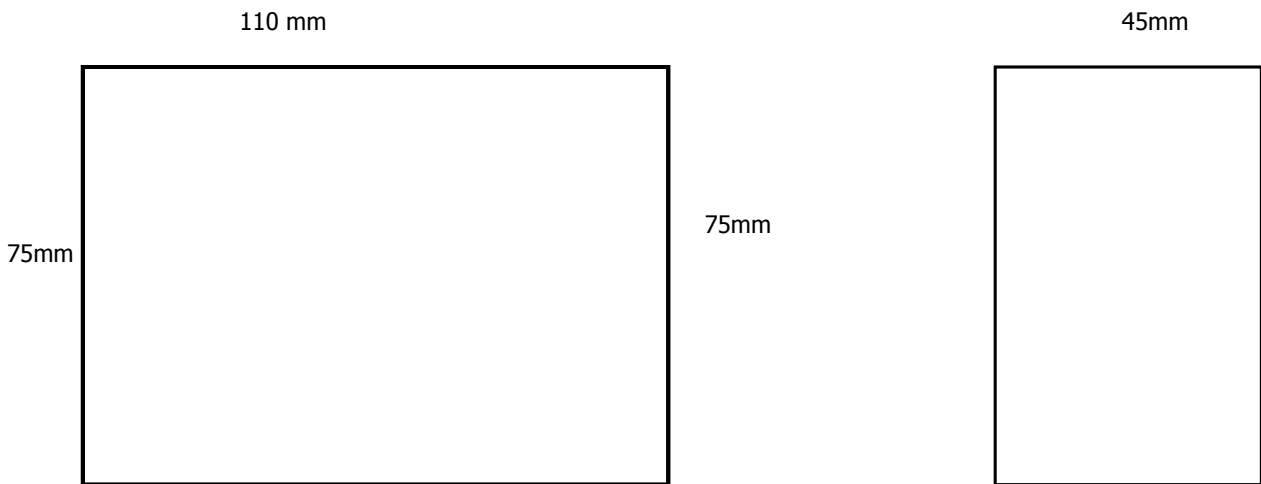




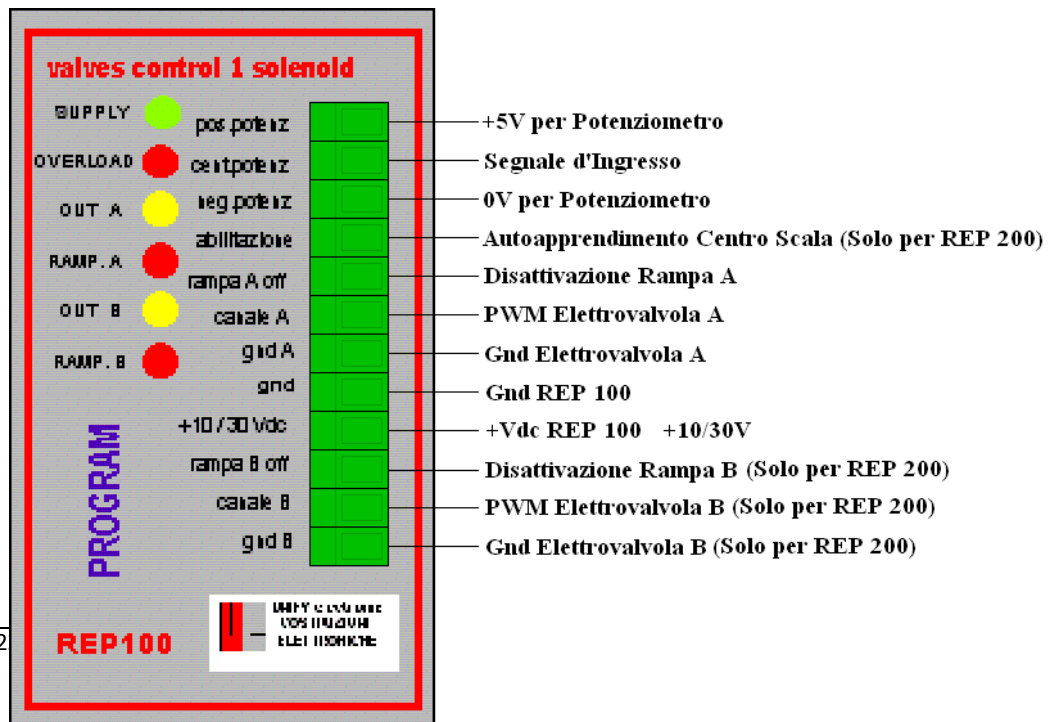
REP-200 EMC

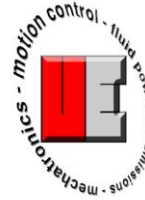
Electronic Regulator for Proportional Valves at Double Solenoid

DIMENSIONS



WIRING





Unify Electronic
Design and Engineering
Electronic Equipment

REP-200 EMC

Electronic Regulator for Proportional Valves at Double Solenoid

The company assumes no responsibility for any errors that may be present in this document and also reserves the right to change the descriptions and data without notice.



Unify Electronic Srl Via Ovidio, N.11-13-15/D 42124 Gaida(RE)

Tel. 0522/678569 - 0522/1700886 e-mail. vendite@unifyelectronic.com P.Iva & C.F. 02578620359