

REP-100 EMC

Electronic Regulator for Proportional Valves at Single Solenoid

The command REP-100 and designed to drive proportional valve solenoid with a single ring that is open those valves that do not have the internal transducer positioning. The REP100 is a device microcontroller and thanks to this technology "DIGITAL" and 'can drive any type and brand of proportional valve, a voltage of between 10 and 30 Vdc and a current between 0 and 2500mA. . The adjustment of current and ramps is done by a pro-grammatore handheld PES93C46 or a PC running special software. The regulator and 'integrated in a box with a bar omega attack.

SUPPLY VOLTAGE.....da 8V @ 30V
 CORRENT ABSORBED.....18mA @ 12V
 RISOLUTION INPUT POTENTIOMETER.....10Bit
 OUTPUT SUPPLY VOLTAGE POTENTIOMETER..... + 5V
 MAX. OUTPUT POWER POTENTIOMETER.....1W
 BEST POTENTIOMETER VALUE.....4K7/10K
 INPUT REFERENCE.....0 – 4,5 V / 0-10V/ PWM
 ZONE OFF.....0V
 OPERATING CURRENT RANGE
 PROPORTIONAL VALVESda 0.05A @ 2,5 A
 CORRENTE REGULATION Imin., Imax.....0 – 50%
 OPERATING TIME RANGE.....0 – 10Sec
 PWM.....120Hz- 330Hz
 RESOLUTION PWM8 Bit
 TOLLERANCE+/-2%
 OPERATING TEMPERATURE RANGE.....-15°C ÷ +70°C
 CONNECTOR.....connector phenix 12 poli 3,54"
 ENVIRONMENTAL SEALING.....IP55
 FILTER EMI :only input and output
 OUTPUT PROTECTION OF THE SHORT-CIRCUIT
 REPORTING VALVES INTERRUPTED OR OFFLINE
 PROGRAMMING PARAMETRES Imin., Imax., Ramps,
 Input reference, Valves supply, PWM at work,
 Sensitive e regulation of the input signal , regulation central point
 OPTIONAL : Serial communication rs232 , CanBus

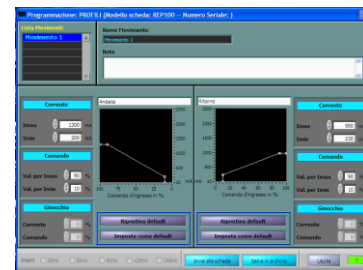


Image windows Program system Gamma 1 SUITE

PRODUCT WITH THE EUROPEAN DIRECTIVE RHOS 2002/95/CE

Certification CE

EMC European Norms EN61000-6-2 industrial immunity

EN 61000-6-4 Issue

Note if you use cables longer than 3 meters you must enter a ferrite EMI 7427044 (74270057) on the cable of the valve.

Code Article: F00169-0000-000 Standard model
 F00169-0000-PWM Model Input PWM
 F00169-0232-0RS Model Input RS232



REP-100 EMC

Electronic Regulator for Proportional Valves at Single Solenoid

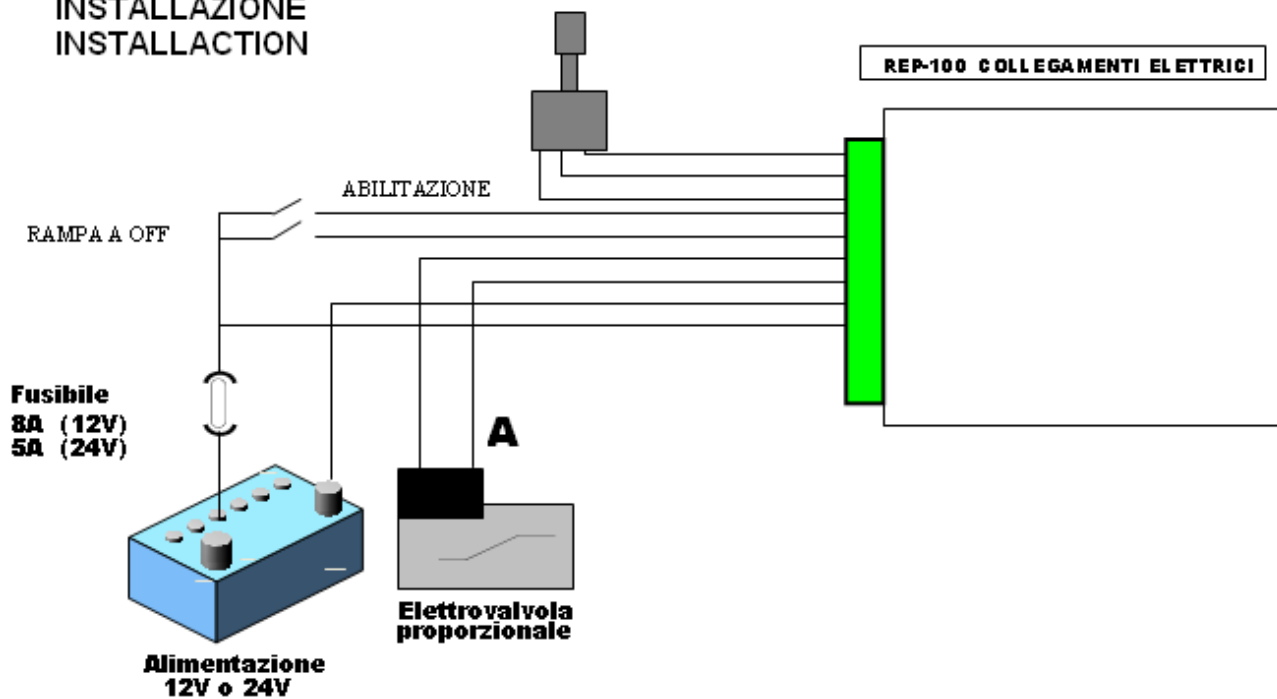
OPERATION

The regulator REP-100 and 'integrated in a box with a graft omega bar with the clamp 12 poles pull on the frontier. The system works on the principle of pulse amplitude modulated PWM said, and return DC to obtain an output current proportional solenoid on the input signal. Have been provided protections against short-circuit output, current-limiting in case of over temperature protection and reverse the polarities' food.

CALIBRATION

The REP-100 can 'be adjusted at will by the PC with dedicated software GAAMMA 1 SUITE . The GAMMA 1 SUITE is possible free download to the Our site www.unifyelectronic.com . Can provide REP-100 al ready' pre-calibrated to customer specification

**INSTALLAZIONE
INSTALLACTION**



DIMENSIONS

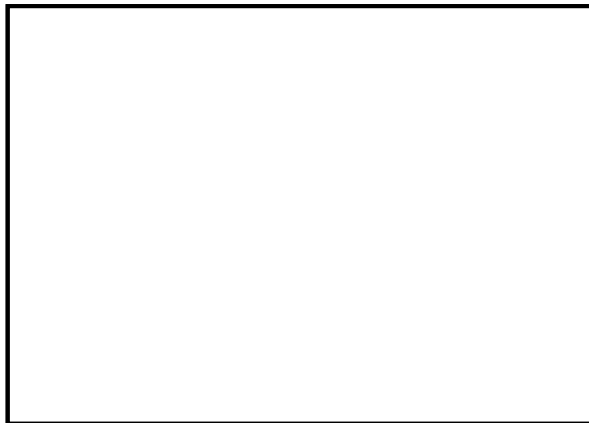


REP-100 EMC

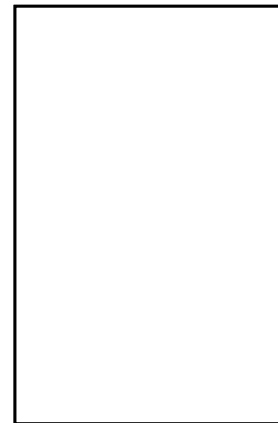
Electronic Regulator for Proportional Valves at Single Solenoid

110 mm

45mm

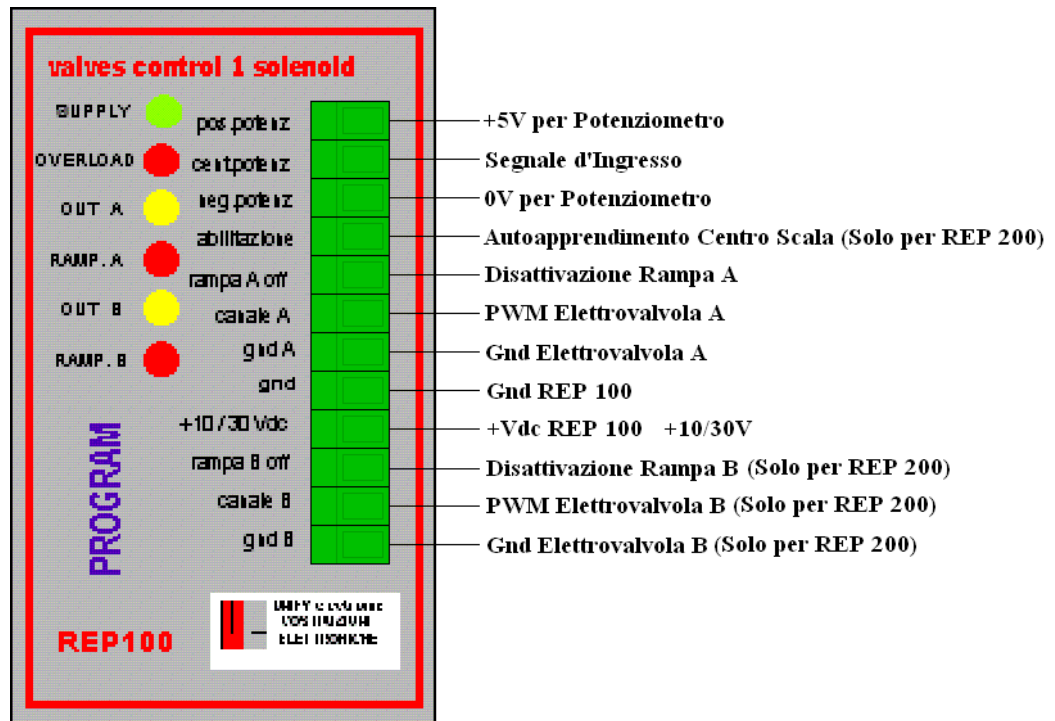


75mm



75mm

WIRING





Unify Electronic
Design and Engineering
Electronic Equipment

REP-100 EMC

Electronic Regulator for Proportional Valves at Single Solenoid

The company assumes no responsibility for any errors that may be present in this document and also reserves the right to change the descriptions and data without notice.



Unify Electronic Srl Via Ovidio, N.11-13-15/D 42124 Gaida(RE)

Tel. 0522/678569 - 0522/1700886 e-mail. vendite@unifyelectronic.com P.Iva & C.F. 02578620359