

PPC-REP

Software Programming To Rep – Din –SSR-ADA2

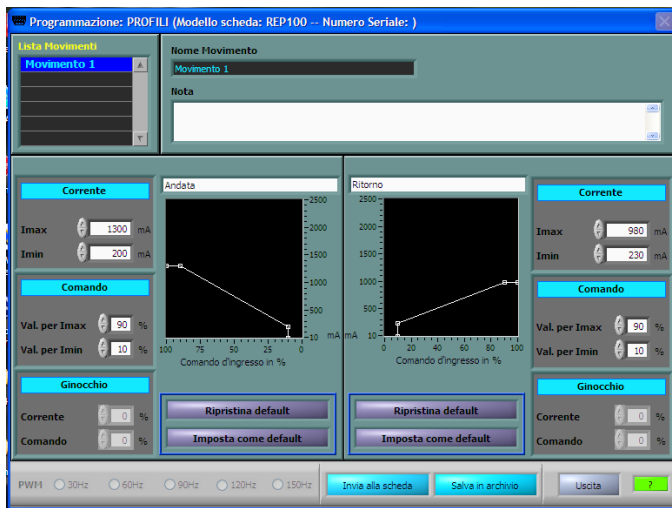
The software PPC-REP is a system of programming and data acquisition to be applied to products of the family Rep. Built on a platform of the LAB-VIEW NATIONAL INSTRUMENT allows you to change the current minimum, the maximum current, ramp, the reference input and adjusting the sensitivity of the input signal.

This system can reduce the time programming and configuration of the cards thanks to proportional REP database which allows the user to retrieve drawn and programs of the various models of power whenever you want.

The most significant pages of the system are those of PROFILES fig.1 and RAMPS fig.2.

The software comes bundled with an adapter cable for RS232 serial or USB that in addition to data transmission also supplies the card.

Fig.1

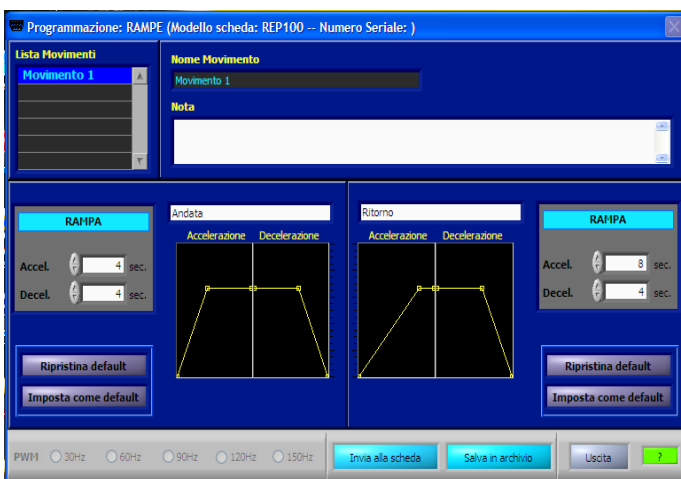


ELECTRICAL TECHNICAL

SUPPLY VOLTAGE adapter da Pc o Rep..... 5V
 CURRENT..... 20mA
 OPERATING TEMPERATURE.....-15°C÷70°C
 ENVIRONMENTAL SEALING.....IP55
 CABLE FURNISHED.....1pz
 OUTPUT CONNECTOR RJ45 I2C
 INPUT CONNECTOR RS 232 or USB
 DATA STORAGE ON DATA BASE
 CABLE ethernet normal.....1mt

**PRODUCT WITH THE EUROPEAN DIRECTIVE
 RHOS2002/95/CE
 Certification CE**

Fig.2



The company assumes no responsibility for any errors that may be present in this document and also reserves the right to change the descriptions and data without notice.

