

BP-1224

Mini Armrest For Servocontrol

The Mini Armrest BP1224 was created to drive 12 proportional valves and 24 ON/OFF valves having an open loop (these valves don't have the transducer of inside position) The regulator is integrated in a palmar ergonomic box , to be set directly in to the armrest of the vehicle or to be held on the hand .

It can be used in any application where a remote control is requested like hedge trimmer jibs , jibs for the cutting of the vine, excavator jibs, pallet forks .

TECHNICAL CHARACTERISTICS:

ELECTRICAL

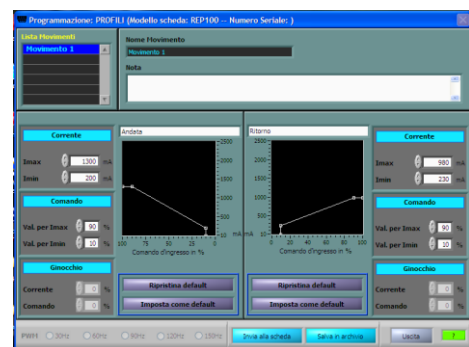
SUPPLY VOLTAGE:.....to 8V @30V
 CURRENT:.....90mA @ 12V
 12 OUTPUTS PROPORZIONAL VLVES:.....from 0,05 A to 3A
 24 OUTPUTS ON/OFF VALVES:.....to 2,5A
 24 BUTTONS:.....to configure as you like
 1 JOYSTICK.....2 o 3 xis
 REGULATION OF CURRENT : Imin., Imax:.....0 100%
 REGULATION OF RAMP TIME :.....0 – 10Sec
 PWM:.....100Hz- 330Hz
 RESOLUTION PWM:.....9 Bit @100Hz
 TOLLERANCE:..... +/-2%
 RANGE OF TEMPERATURE:.....-15°C ÷ +70°C
 ENDINGS :..... to configure as you like
 for example : connector DIN 43650 and lenght of
 the cable 5 mt
 OUTPUTS PROTECTED AGAINST SHORT CIRCUIT



MECHANICAL

MATERIAL OF THE BOX.....ABS
 RESISTENCE OF THE CONCTATS:.....<4mOhm
 TEMINAL :..... Pg16
 DIAMETER OF CABLE:.....24unitX0,50
 DEGREE OF PROTECTION:.....IP65
 GRADE OF ISOLATION:.....VDE0110
 COLOR OF THE BOX:.....Nero
 PACKING RUBBER:..... Rubber Nitrilica -40 +90°C
 Silicone -40 +125°C

PROGRAMMING BY PC with Software GAMMA 1 SUITE
 Imin., Imax., Ramp , for each canal
 Input of Reference , PWM work ,
 Regulation of sensibility of input signal



**PRODUCT CONFORME TO THE EUROPEAN DIRECTIVE RHOS
 2002/95/CE**

Product Code : F00224-0000-000

WORKING





BP-1224

Mini Armrest For Servocontrol

The system for the 12 proportional valves works on the pulsations modulate denominated PWM, it is retraction in current to obtain an output current on proportional solenoid at entry signal, while for the 24 ON/OFF valves are controllers to mosfet components. They have been foreseen protections against the short-circuit in output, limitation in current in case of high temperature and protection against inversion of polarity of alimentation.

CALIBRATION

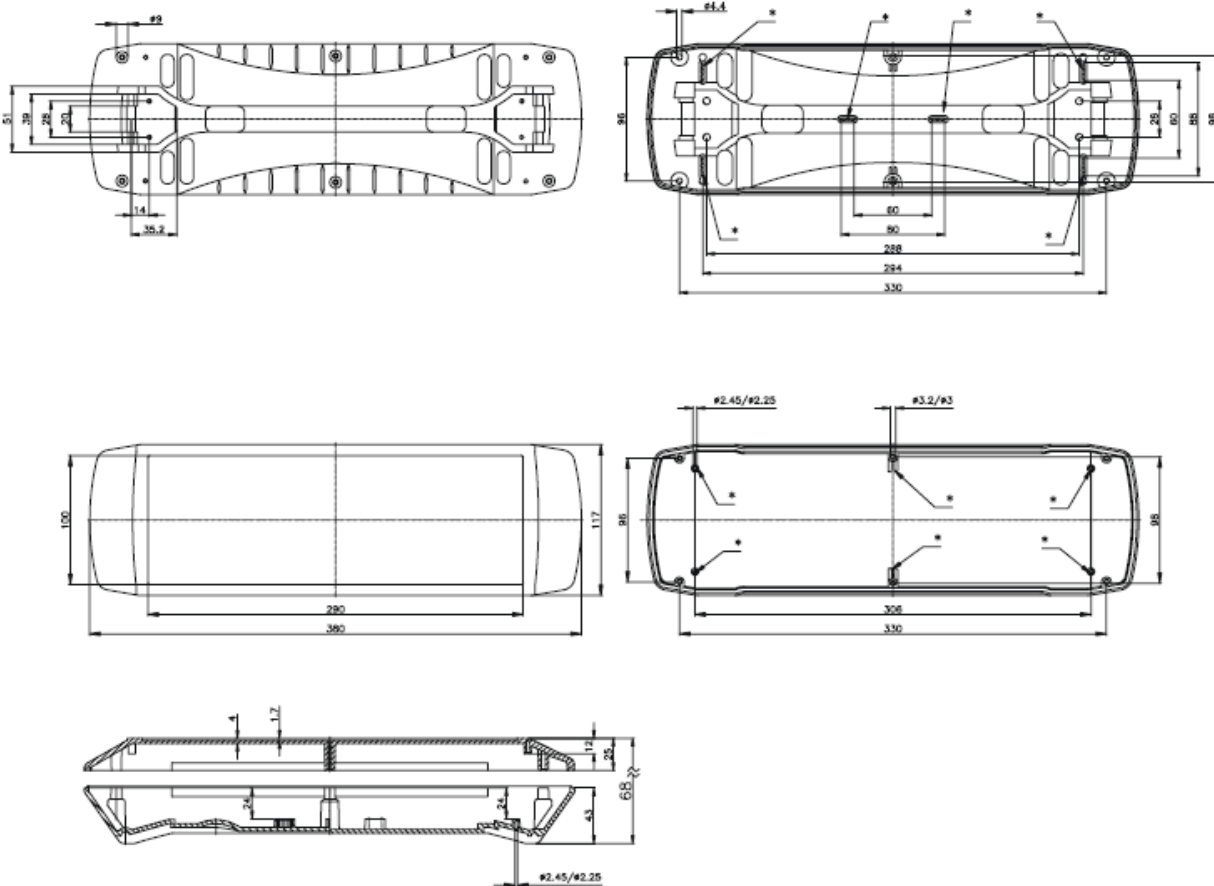
The Mini Armrest BP1224 can to be regulate through the programming PC with dedicated software GAMMA 1 SUITE ,the software downloaded free to internet www.unifyelectronic.com
If we insert the cable in the connector the system automatically positions in the modality of programming dedicated to product.

DIMENSIONS



BP-1224

Mini Armrest For Servocontrol



The company assume no responsibility for only errors which may appear in this document, reserves the right to change device or specifications detailed herein at any time without notice.

