

ADA2-XXX

Current Voltage Adapter In /Out

The CURRENT VOLTAGE ADAPTER IN/OUT is a product that serves in all those cases where equipment must be 2 interface between them with different voltages and currents. One of the most common is the connection of a joystick or a plc with a distributor PVG 32 Danfoss, which thanks to digital technology, you can modify the software and interfacing a wide range of applications with a range of work between 10-30 Vdc and up to 1 A per channel output

**ELECTRICAL CHARACTERISTICS MOD. F00234-0005-10D
F00234-0010-10D**

POWER SUPPLY :10V@30V
 CONSUMPTION :18mA@24V
 POWER UTILITIES Vref :5V / 10V
 MAX.LOAD CURRENT UTILITY:100mA
 INPUT 1:0@5V / 0@10V
 OUTPUT 1:25%@75%Vcc
 NEUTRAL ZONE INPUT :2,5V
 NEUTRAL ZONE OUTPUT:50%Vcc
 MAX. OUTPUT CURRENT(for sigle channel):1A
 TEMPERATURE RANGE:-15°C ÷ +70°C
 BURNING CLASS:V0 (UL94)
 HOUSING:Box with Connector Din for omega bar
 TERMINAL:at Screw1x6pole,2x3pole,1x2pole
 CONTAINER:at not extinguishing polymer 6,8 (u194 v0)
 CALIBRATION:By software

OPTION:

DEGREE OF PROTECTION (model SA):IP65
 TEMPERATURE RANGE (model I):-40°C ÷ +85°C

**PRODUCT COMPLIES WITH EUROPEAN DIRECTIVE
RHOS 2002/95/CE**



MODEL SA



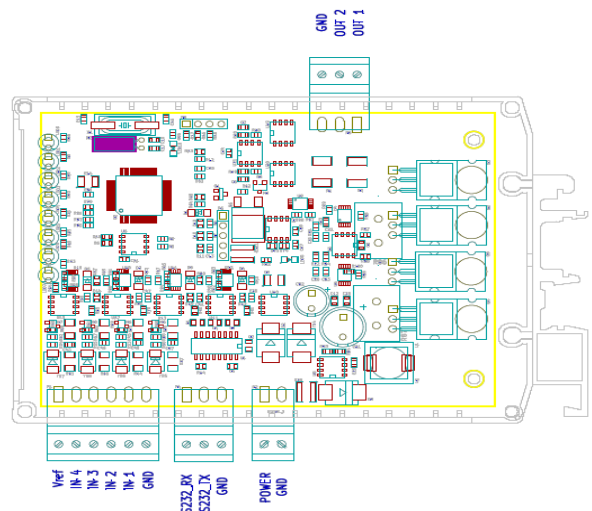
ELECTRICAL CHARACTERISTICS MOD. F00234-1420-10D

POWER SUPPLY :10V@30V
 CONSUMPTION :18mA@24V
 POWER UTILITIES Vref :5V / 10V
 MAX.LOAD CURRENT UTILITY:100mA
 INPUT 1:4@20mA
 OUTPUT 1:25%@75%Vcc
 NEUTRAL ZONE INPUT :12mA
 NEUTRAL ZONE OUTPUT:50%Vcc
 MAX. OUTPUT CURRENT(for sigle channel):1A
 TEMPERATURE RANGE:-15°C ÷ +70°C
 BURNING CLASS:V0 (UL94)
 HOUSING:Box with Connector Din for omega bar
 TERMINAL:at Screw1x6pole,2x3pole,1x2pole
 CONTAINER:at not extinguishing polymer 6,8 (u194 v0)
 CALIBRATIO:By software

OPTION:

DEGREE OF PROTECTION (model SA):IP65
 TEMPERATURE RANGE (model I):-40°C ÷ +85°C

**PRODUCT COMPLIES WITH EUROPEAN DIRECTIVE
RHOS 2002/95/CE**



ADA2-XXX

Current Voltage Adapter In /Out

**ELECTRICAL CHARACTERISTICS MOD. F00234-2005-20D
F00234-2010-20D**

POWER SUPPLY :10V@30V
 CONSUMPTION :18mA@24V
 POWER UTILITIES Vref :5V / 10V
 MAX.LOAD CURRENT UTILITY:100mA
 INPUT 1:0-5V@0-10V
 INPUT 2:0-5V@0-10V
 OUTPUT 1:25%@75%Vcc
 OUTPUT 2:25%@75%Vcc
 NEUTRAL ZONE INPUT :50%Vref
 NEUTRAL ZONE OUTPUT:50%Vcc
 MAX. OUTPUT CURRENT(for sigle channel):1A
 TEMPERATURE RANGE:-15°C ÷ +70°C
 BURNING CLASS:V0 (UL94)
 HOUSING:Box with Connector Din for omega bar
 TERMINAL:at Screw1x6pole,2x3pole,1x2pole
 CONTAINER:at not extinguishing polymer 6,8 (u194 v0)
 CALIBRATION:By software

OPTION:

DEGREE OF PROTECTION (model SA):IP65
 TEMPERATURE RANGE (model I):-40°C ÷ +85°C

**PRODUCT COMPLIES WITH EUROPEAN DIRECTIVE
RHOS 2002/95/CE**



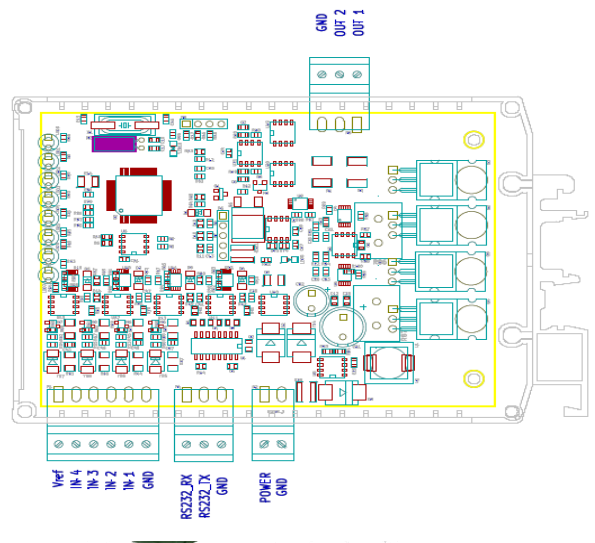
ELECTRICAL CHARACTERISTICS MOD. F00234-2420-20D

POWER SUPPLY :10V@30V
 CONSUMPTION :18mA@24V
 POWER UTILITIES Vref :5V / 10V
 MAX.LOAD CURRENT UTILITY:100mA
 INPUT 1:4@20mA
 INPUT 2:4@20mA
 OUTPUT 1:25%@75%Vcc
 OUTPUT 2:25%@75%Vcc
 NEUTRAL ZONE INPUT :12mA
 NEUTRAL ZONE OUTPUT:50%Vcc
 MAX. OUTPUT CURRENT(for sigle channel):1A
 TEMPERATURE RANGE:-15°C ÷ +70°C
 BURNING CLASS:V0 (UL94)
 HOUSING:Box with Connector Din for omega bar
 TERMINAL:at Screw1x6pole,2x3pole,1x2pole
 CONTAINER:at not extinguishing polymer 6,8 (u194 v0)
 CALIBRATION:By software

OPTION:

DEGREE OF PROTECTION (model SA):IP65
 TEMPERATURE RANGE (model I):-40°C ÷ +85°C

**PRODUCT COMPLIES WITH EUROPEAN DIRECTIVE
RHOS 2002/95/CE**





ADA2-XXX

Current Voltage Adapter In /Out

ELECTRICAL CHARACTERISTICS MOD. F00234-2575-20D

POWER SUPPLY :.....10V@30V
 CONSUMPTION :.....18mA@24V
 POWER UTILITIES Vref :.....5V / 10V
 MAX.LOAD CURRENT UTILITY:.....100mA
 INPUT 1:.....25%@75%Vcc
 INPUT 2:.....25%@75%Vcc
 OUTPUT 1:.....25%@75%Vcc
 OUTPUT 2:.....25%@75%Vcc
 NEUTRAL ZONE INPUT :.....50%Vref
 NEUTRAL ZONE OUTPUT:.....50%Vcc
 MAX. OUTPUT CURRENT(for sigle channel):.....1A
 TEMPERATURE RANGE:.....-15°C ÷ +70°C
 BURNING CLASS:V0 (UL94)
 HOUSING:.....Box with Connector Din for omega bar
 TERMINAL:at Screw1x6pole,2x3pole,1x2pole
 CONTAINER:.....at not extinguishing polymer 6,8 (u194 v0)
 CALIBRATION:It's possible setting By software the % to voltage input , The % to voltage output and the ramp

OPTION:

DEGREE OF PROTECTION (model SA):.....IP65
 TEMPERATURE RANGE (model I):.....-40°C ÷ +85°C

**PRODUCT COMPLIES WITH EUROPEN DIRECTIVE
 RHOS 2002/95/CE**



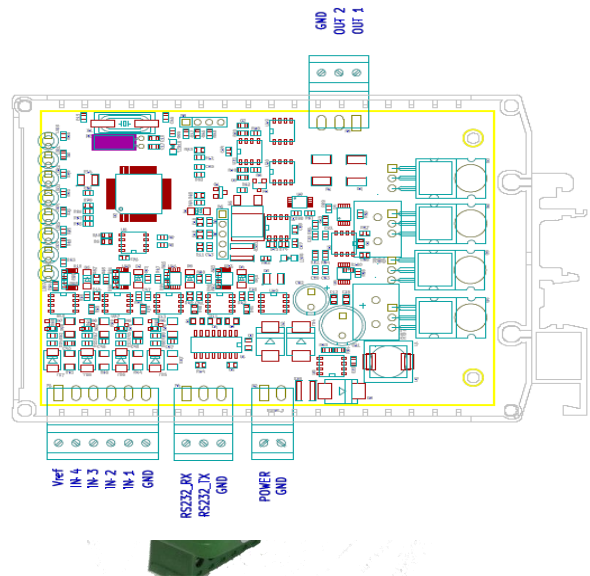
ELECTRICAL CHARACTERISTICS MOD. F00234-2I05-225

POWER SUPPLY :.....10V@30V
 CONSUMPTION :.....18mA@24V
 POWER UTILITIES Vref :.....5V / 10V
 MAX.LOAD CURRENT UTILITY:.....100mA
 INPUT 1:.....0-5V
 INPUT 2:.....0-5V
 OUTPUT 1:.....2V@5V
 OUTPUT 2:.....2V@5V
 NEUTRAL ZONE INPUT :.....50%Vref
 NEUTRAL ZONE OUTPUT:.....50%Vout
 MAX. OUTPUT CURRENT(for sigle channel):.....1A
 TEMPERATURE RANGE:.....-15°C ÷ +70°C
 BURNING CLASS:V0 (UL94)
 HOUSING:.....Box with Connector Din for omega bar
 TERMINAL:at Screw1x6pole,2x3pole,1x2pole
 CONTAINER:.....at not extinguishing polymer 6,8 (u194 v0)
 CALIBRATION:.....By software

OPTION:

DEGREE OF PROTECTION (model SA):.....IP65
 TEMPERATURE RANGE (model I):.....-40°C ÷ +85°C

**PRODUCT COMPLIES WITH EUROPEN DIRECTIVE
 RHOS 2002/95/CE**



ADA2-XXX

Current Voltage Adapter In /Out

ELECTRICAL CHARACTERISTICS MOD. F00234-2I24-10D

POWER SUPPLY :10V@30V
 CONSUMPTION :18mA@24V
 POWER UTILITIES Vref :5V / 10V
 MAX.LOAD CURRENT UTILITY:100mA
 INPUT 1:24Vcc
 INPUT 2:24Vcc
 OUTPUT 1:25%@75%Vcc
 NEUTRAL ZONE INPUT :0V
 NEUTRAL ZONE OUTPUT:50%Vcc
 MAX. OUTPUT CURRENT(for sigle channel):1A
 TEMPERATURE RANGE:-15°C ÷ +70°C
 BURNING CLASS:V0 (UL94)
 HOUSING:Box with Connector Din for omega bar
 TERMINAL:at Screw1x6pole,2x3pole,1x2pole
 CONTAINER:at not extinguishing polymer 6,8 (u194 v0)
 CALIBRATION:It's possible setting By software the % to voltage input , The % to voltage output and the ramp

OPTION:

DEGREE OF PROTECTION (model SA):IP65
 TEMPERATURE RANGE (model I):-40°C ÷ +85°C

**PRODUCT COMPLIES WITH EUROPEN DIRECTIVE
 RHOS 2002/95/CE**



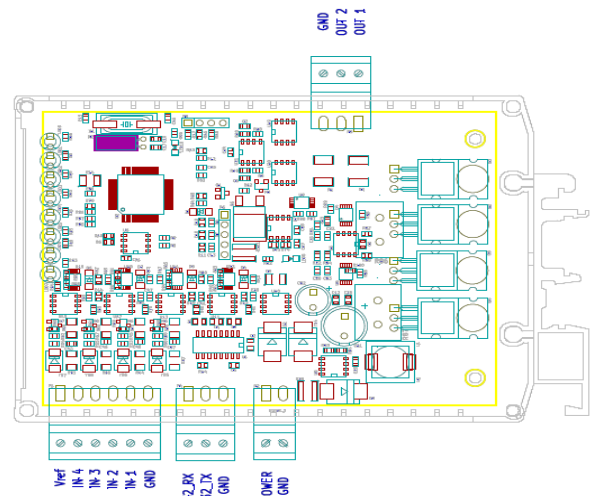
ELECTRICAL CHARACTERISTICS MOD. F00234-3I24-1ND

POWER SUPPLY :10V@30V
 CONSUMPTION :18mA@24V
 POWER UTILITIES Vref :5V / 10V
 MAX.LOAD CURRENT UTILITY:100mA
 INPUT 1:0V@Vcc
 INPUT 2:24Vcc disable 25%
 INPUT 3:24Vcc disable 75%
 OUTPUT 1:25%@75%Vcc
 NEUTRAL ZONE INPUT :50%Vref
 NEUTRAL ZONE OUTPUT:50%Vcc
 MAX. OUTPUT CURRENT(for sigle channel):1A
 TEMPERATURE RANGE:-15°C ÷ +70°C
 BURNING CLASS:V0 (UL94)
 HOUSING:Box with Connector Din for omega bar
 TERMINAL:at Screw1x6pole,2x3pole,1x2pole
 CONTAINER:at not extinguishing polymer 6,8 (u194 v0)
 CALIBRATION:It's possible setting By software the % to voltage input , The % to voltage output and the ramp

OPTION:

DEGREE OF PROTECTION (model SA):IP65
 TEMPERATURE RANGE (model I):-40°C ÷ +85°C

**PRODUCT COMPLIES WITH EUROPEN DIRECTIVE
 RHOS 2002/95/CE**



ADA2-XXX

Current Voltage Adapter In /Out

**ELECTRICAL CHARACTERISTICS MOD. F00234-2I05-100
F00234-2I10-100**

POWER SUPPLY :.....10V@30V
 CONSUMPTION :.....18mA@24V
 POWER UTILITIES Vref :.....5V / 10V
 MAX.LOAD CURRENT UTILITY:.....100mA
 INPUT 1:.....0-5V@0-10V
 INPUT 2:.....0-5V@0-10V
 OUTPUT 1-2:.....+/-100mA
 NEUTRAL ZONE INPUT :.....0V
 NEUTRAL ZONE OUTPUT:.....0mA
 MAX. OUTPUT CURRENT(for sigle channel):.....1A
 TEMPERATURE RANGE:.....-15°C ÷ +70°C
 BURNING CLASS:V0 (UL94)
 HOUSING:.....Box with Connector Din for omega bar
 TERMINAL:at Screw1x6pole,2x3pole,1x2pole
 CONTAINER:.....at not extinguishing polymer 6,8 (u194 v0)
 CALIBRATION: It's possible setting By softwareThe output
 Current and the ramp

OPTION:

DEGREE OF PROTECTION (model SA):.....IP65
 TEMPERATURE RANGE (model I):.....-40°C ÷ +85°C

**PRODUCT COMPLIES WITH EUROPEN DIRECTIVE
RHOS 2002/95/CE**



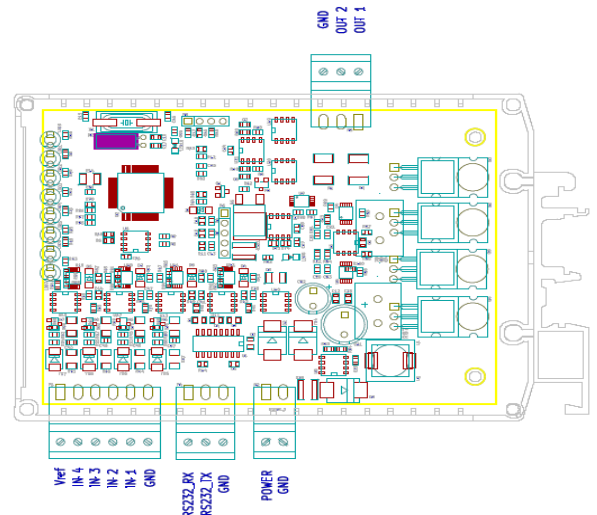
**ELECTRICAL CHARACTERISTICS MOD. F00234-1I05-100
F00234-1I10-100**

POWER SUPPLY :.....10V@30V
 CONSUMPTION :.....18mA@24V
 POWER UTILITIES Vref :.....5V / 10V
 MAX.LOAD CURRENT UTILITY:.....100mA
 INPUT 1:.....0-5V@0-10V
 OUTPUT 1-2:.....+/-100mA
 NEUTRAL ZONE INPUT :.....50%Vref
 NEUTRAL ZONE OUTPUT:.....0mA
 MAX. OUTPUT CURRENT(for sigle channel):.....1A
 TEMPERATURE RANGE:.....-15°C ÷ +70°C
 BURNING CLASS:V0 (UL94)
 HOUSING:.....Box with Connector Din for omega bar
 TERMINAL:at Screw1x6pole,2x3pole,1x2pole
 CONTAINER:.....at not extinguishing polymer 6,8 (u194 v0)
 CALIBRATION: It's possible setting By softwareThe output
 Current and the ramp

OPTION:

DEGREE OF PROTECTION (model SA):.....IP65
 TEMPERATURE RANGE (model I):.....-40°C ÷ +85°C

**PRODUCT COMPLIES WITH EUROPEN DIRECTIVE
RHOS 2002/95/CE**



ADA2-XXX

Current Voltage Adapter In /Out

ELECTRICAL CHARACTERISTICS MOD. F00234-2575-100

POWER SUPPLY :.....10V@30V
 CONSUMPTION :.....18mA@24V
 POWER UTILITIES Vref :.....5V / 10V
 MAX.LOAD CURRENT UTILITY:.....100mA
 INPUT 1:.....25%Vcc@75%Vcc
 OUTPUT 1-2:.....+/-100mA
 NEUTRAL ZONE INPUT :.....50%Vcc
 NEUTRAL ZONE OUTPUT:.....0mA
 MAX. OUTPUT CURRENT(for sigle channe.l):.....1A
 TEMPERATURE RANGE:.....-15°C ÷ +70°C
 BURNING CLASS:V0 (UL94)
 HOUSING:.....Box with Connector Din for omega bar
 TERMINAL:at Screw1x6pole,2x3pole,1x2pole
 CONTAINER:.....at not extinguishing polymer 6,8 (u194 v0)
 CALIBRATION: ...It's possible setting By softwareThe output
 Current and the ramp

OPTION:

DEGREE OF PROTECTION (model SA):.....IP65
 TEMPERATURE RANGE (model I):.....-40°C ÷ +85°C

**PRODUCT COMPLIES WITH EUROPEAN DIRECTIVE
 RHOS 2002/95/CE**



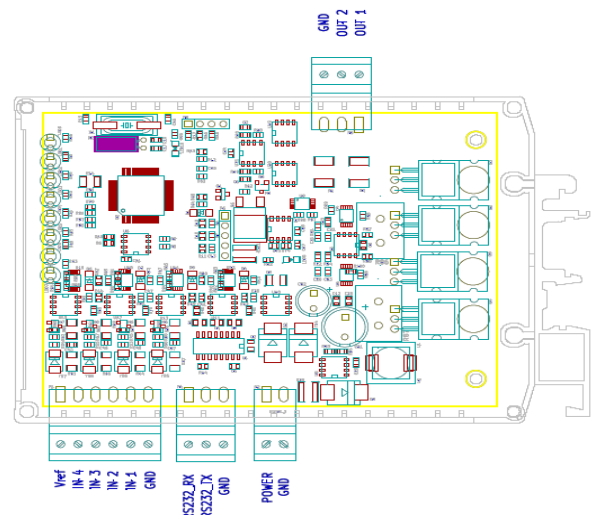
ELECTRICAL CHARACTERISTICS MOD. F00234-S232-10D

POWER SUPPLY :.....10V@30V
 CONSUMPTION :.....18mA@24V
 POWER UTILITIES Vref :.....5V / 10V
 MAX.LOAD CURRENT UTILITY:.....100mA
 INPUT RS:.....RS232
 OUTPUT 1:.....25%@75%Vcc
 NEUTRAL ZONE INPUT :.....da protocollo
 NEUTRAL ZONE OUTPUT:.....50%Vcc
 MAX. OUTPUT CURRENT(for sigle channel):.....1A
 TEMPERATURE RANGE:.....-15°C ÷ +70°C
 BURNING CLASS:V0 (UL94)
 HOUSING:.....Box with Connector Din for omega bar
 TERMINAL:at Screw1x6pole,2x3pole,1x2pole
 CONTAINER:.....at not extinguishing polymer 6,8 (u194 v0)
 CALIBRATION:.....By software

OPTION:

DEGREE OF PROTECTION (model SA):.....IP65
 TEMPERATURE RANGE (model I):.....-40°C ÷ +85°C

**PRODUCT COMPLIES WITH EUROPEAN DIRECTIVE
 RHOS 2002/95/CE**



ELECTRICAL CHARACTERISTICS MOD. F00234-4505-20D F00234-4010-20D





ADA2-XXX

Current Voltage Adapter In /Out

POWER SUPPLY :10V@30V
 CONSUMPTION :18mA@24V
 POWER UTILITIES Vref :5V / 10V
 MAX.LOAD CURRENT UTILITY:100mA
 INPUT 1:0-5V@0-10V
 INPUT 2:0-5V@0-10V
 INPUT 3:0-5V@0-10V
 INPUT 4:0-5V@0-10V
 OUTPUT 1:25%@75%Vcc
 OUTPUT 2:25%@75%Vcc
 NEUTRAL ZONE INPUT :0V
 NEUTRAL ZONE OUTPUT:50%Vcc
 MAX. OUTPUT CURRENT(for sigle channel):1A
 TEMPERATURE RANGE:-15°C ÷ +70°C
 BURNING CLASS:V0 (UL94)
 HOUSING:Box with Connector Din for omega bar
 TERMINAL:at Screw1x6pole,2x3pole,1x2pole
 CONTAINER:at not extinguishing polymer 6,8 (u194 v0)
 CALIBRATION:By software

OPTION:

DEGREE OF PROTECTION (model SA):IP65
 TEMPERATURE RANGE (model I):-40°C ÷ +85°C

**PRODUCT COMPLIES WITH EUROPEN DIRECTIVE
 RHOS 2002/95/CE**



CARATTERISTICHE ELETTRICHE MOD. F00234-4505-20N

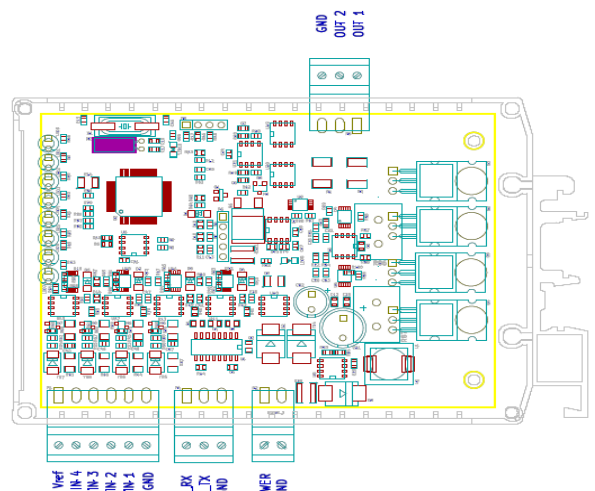
POWER SUPPLY :10V@30V
 CONSUMPTION :18mA@24V
 POWER UTILITIES Vref :5V / 10V
 MAX.LOAD CURRENT UTILITY:100mA
 INPUT 1:0-5V@0-10V
 INPUT 2:0-5V@0-10V
 INPUT 3:0-5V@0-10V
 INPUT 4:0-5V@0-10V
 OUTPUT 1:0-2,5-5V
 OUTPUT 2:0-2,5-5V
 NEUTRAL ZONE INPUT :0V
 NEUTRAL ZONE OUTPUT:50%Vcc
 MAX. OUTPUT CURRENT(for sigle channel):1A
 TEMPERATURE RANGE:-15°C ÷ +70°C
 BURNING CLASS:V0 (UL94)
 HOUSING:Box with Connector Din for omega bar
 TERMINAL:at Screw1x6pole,2x3pole,1x2pole
 CONTAINER:at not extinguishing polymer 6,8 (u194 v0)
 CALIBRATIO:By software

OPTION:

DEGREE OF PROTECTION (model SA):IP65
 TEMPERATURE RANGE (model I):-40°C ÷ +85°C

**PRODUCT COMPLIES WITH EUROPEN DIRECTIVE
 RHOS 2002/95/CE**

MODEL SA



ADA2-XXX

Current Voltage Adapter In /Out

Product Code:

ADA2 1 IN 1 OUT

F00234-1105-10D	ADA2 ADAPTER 1 IN 0-5V 1 OUT 25-75% Vcc
F00234-1110-10D	ADA2 ADAPTER 1 IN 0-10V 1 OUT 25-75% Vcc
F00234-1420-10D	ADA2 ADAPTER 1 IN 4-20 mA 1 OUT 25-75% Vcc
F00234-2575-20D	ADA2 ADAPTER 1 IN 25-75% Vcc 1 OUT 25-75% Vcc 1A
F00234-2575-05V	ADA2 ADAPTER 1 IN 25-75% Vcc 1 OUT 0 -5 Vcc 1A
F00234-2124-1ND	ADA2 ADAPTER 1 IN 0-Vcc 2IN 24Vdc 1 OUT 25-75% Vcc con disabilitazione segnale
F00234-2575-100	ADA2 ADAPTER 1IN 25-75% Vcc 1 OUT +/- 100 mA carico 150H
F00234-1110-100	ADA2 ADAPTER 1IN 0-10 Vcc 1 OUT +/- 100 mA carico 150H
F00234-S232-10D	ADA2 ADAPTER 1 IN RS 232 1 OUT 25-75% Vcc

ADA2 2 IN 1 OUT

F00234-2124-10D	ADA2 ADAPTER 2 IN 24Vdc 1 OUT 25-75% Vcc
F00234-2005-100	ADA2 ADAPTER 2IN 0-5 V 1 OUT +/- 100 mA Vcc 12Vdc carico 22H
F00234-2010-100	ADA2 ADAPTER 2IN 0-10 V 1 OUT +/- 100 mA Vcc 12Vdc carico 22H

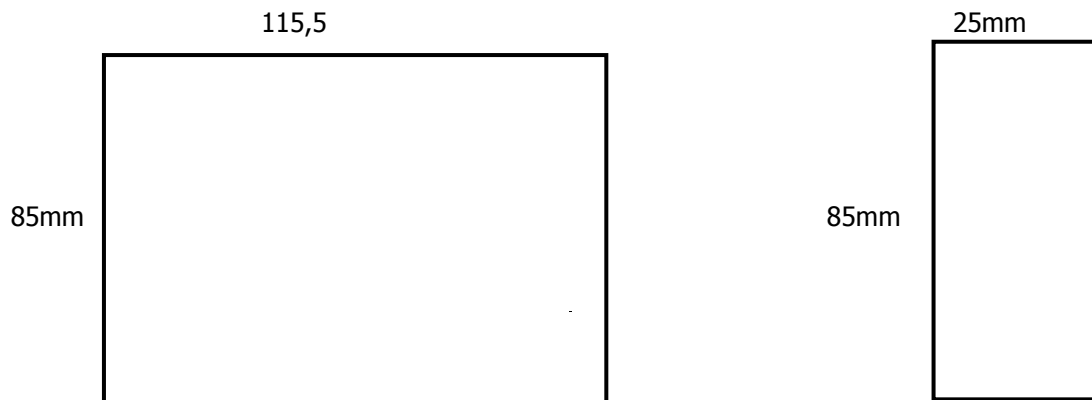
ADA2 2 IN 2 OUT

F00234-2105-225	ADA2 ADAPTER 2 IN 0-5V 2 OUT 2-3,5-5V
F00234-2105-420	ADA2 ADAPTER 2IN 0-5 V 2 OUT 4-20mA
F00234-2105-20D	ADA2 ADAPTER 2 IN 0-5V 2 OUT 25-75% Vcc
F00234-2110-20D	ADA2 ADAPTER 2 IN 0-10V 2 OUT 25-75% Vcc
F00234-2420-20D	ADA2 ADAPTER 2 IN 4-20 mA 2 OUT 25-75% Vcc

ADA2 4 IN 2 OUT

F00234-4505-20D	ADA2 ADAPTER 4 IN 0-5V 2 OUT 25-75% Vcc
F00234-4505-20N	ADA2 ADAPTER 4 IN 0-5V 2 OUT 0-2,5-5 V

DIMENSIONS BOX



The company assume no responsibility for only errors which may appear in this document, reserves the right to change device or specifications detailed herein at any time without notice.